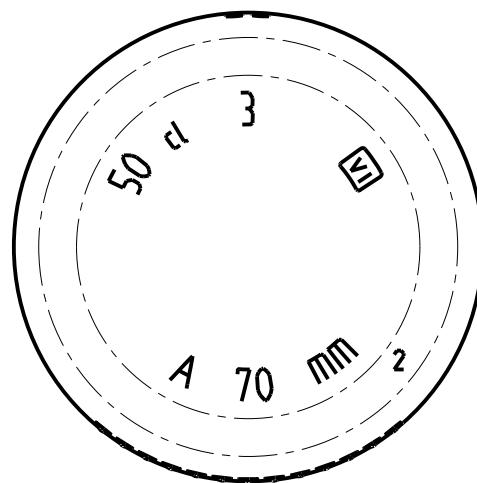
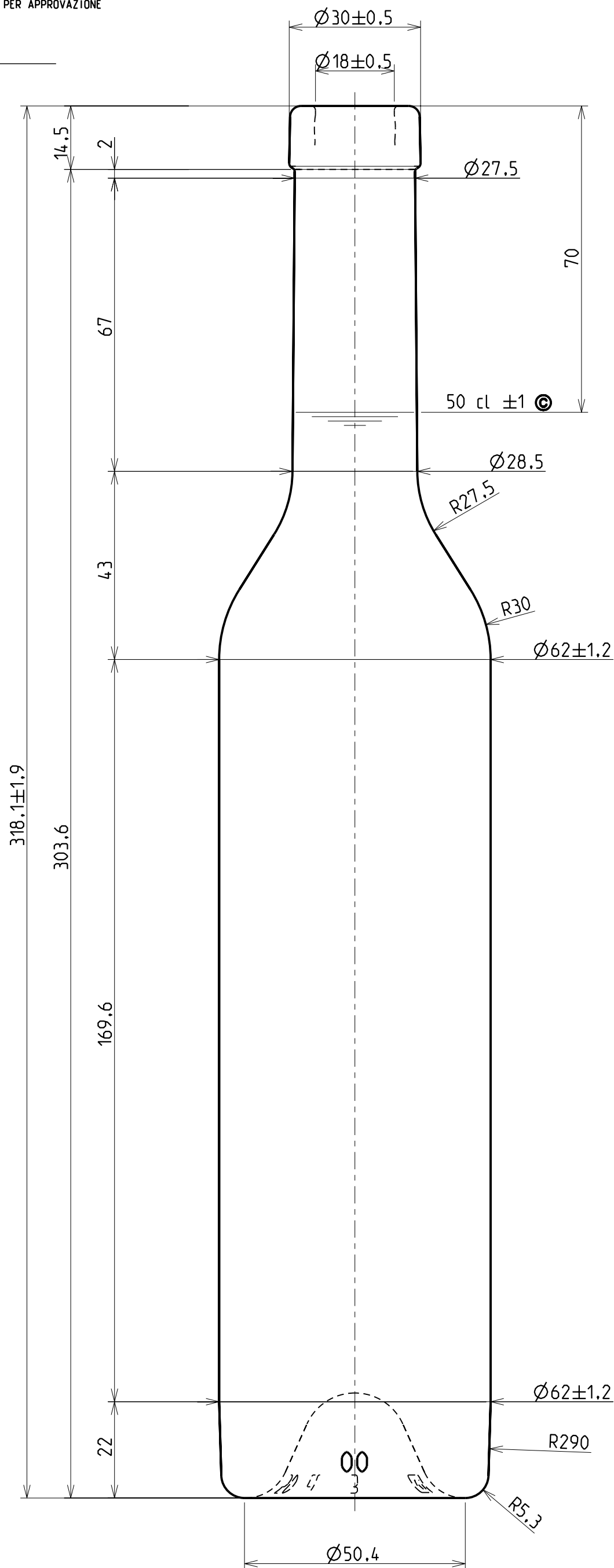
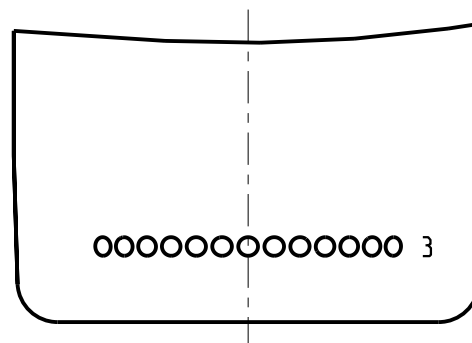


DATA


QUESTO DISEGNO È DI PROPRIETÀ' DI SAINT-GOBAIN VETRI SpA / This design is property of SAINT-GOBAIN VETRI SpA - NE E' VIETATA LA RIPRODUZIONE SENZA PREVENTIVA AUTORIZZAZIONE SCRITTA / Any reproduction without previous written permission is prohibited



	ANGOLO CADUTA TILT ANGLE	12 °
VI	MARCHIO DI FABBRICA TRADE MARK	
A	CONTRASSEGNO TIPO VETRO GLASS TYPE	
00	NUMERO STAMPO CAVITY NUMBER	
2	ZIGRINATURA KNURLING	
3	PUNTI LETTORE CAVITA' DOTE CODE	
4	CODICE ALFANUMERICO NUMERIC CODE	
5	GODRONATURA A DISCREZIONE DELLA VETRERIA STIPLING AT THE DISCRETION OF THE GLASS MAKER	
©	CONTROLLO STATISTICO STATISTICAL CONTROL	



R.V.	DATA	NC	DESCRIZIONE MODIFICA - MODIFICATION DESCRIPTION	FORMAT A3

	ARTICOLO ARTICLE		PRIMAVERA ECOVA' 52.4-FP		PROGETTISTA DRAWING BY		G. Marzoli		CAPAC. RB (cl) BRIMFULL CAPACITY		52.4						
	BOCCA FINISH		FASCETTA PIATTA 30 H 14.5		DATA DATE		15/11/12		PESO (gr) GLASS WEIGHT		400						
	CLIENTE CUSTOMER		VARI		APPROVATO DA APPROVED BY		R. Pedrazzi		COD. BOCCA FINISH CODE		B000115_004						
	DIAMETRO MIN. FORO PASSANTE MINIMUM INTERNAL DIAMETER		16		TOLLERANZA VERTICALITA' VERTICALITY TOLERANCE		± 3,5		SCALA SCALE		1:1		STUDIO CODE STUDY		ST16924		R.V. A.0

QUOTE ESPRESSE IN mm / Dimension expressed in mm - SOLO LE QUOTE CON INDICAZIONE DI TOLLERANZA SONO IMPENNATIVE / Dimensions are contractual only when tolerances are indicated.